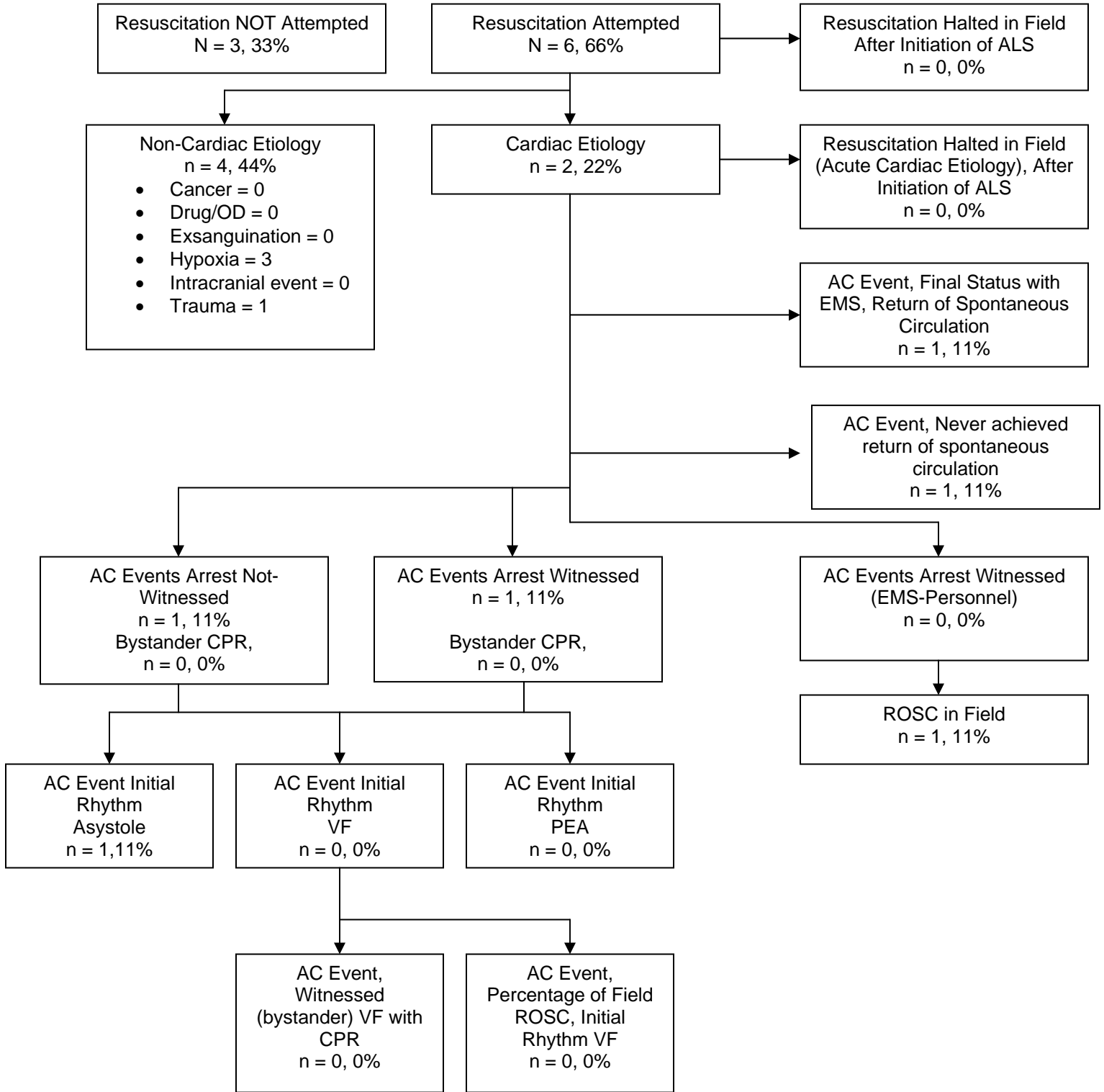




Rogers Fire Department Cardiac Arrest Registry



September 2010
Utstein Style Template Showing Data on Cardiac Arrests
9 Patients



Description	RFD Totals	%
<i>Total Number of Cardiac Arrests with Resuscitation Efforts</i>	6	66%
<i>Total Number of Cardiac Arrest with Resuscitation Efforts: Cardiac Etiology</i>	2	22%
<i>Total Number of Cardiac Arrests with Resuscitation Efforts: Non-Cardiac Etiology</i>	4	44%
<i>Total Field ROSC, AC Event:</i>	1	11%
<i>Total Field ROSC Regardless of Etiology</i>	1	11%
<i>Rhythm on Arrival: Non-Ventricular Group, Cardiac Arrests with Resuscitation Efforts (Asystole/PEA), AC Event</i>	2	22%
<i>Rhythm on Arrival: Ventricular Group, , Cardiac Arrests with Resuscitation Efforts (VF/Pulseless/VT), AC Event</i>	0	0%
<i>Field ROSC from VF, AC Event</i>	0	0%
<i>ETT successfully placed/Cardiac Arrest with Resuscitation Efforts</i>	3	33%
<i>Intravenous/Intraosseous Access/Cardiac Arrest with Resuscitation Efforts</i>	5	55%
<i>Response Time to the Scene < 5 minutes (Responding to Arrival) on Cardiac Arrest with Resuscitation Efforts</i>	1¹	11%
<i>VF, Bystander CPR</i>	0	0%
<i>Site of Cardiac Arrest Regardless of Etiology, Regardless of Resuscitation Efforts (Home)</i>	8	88%
<i>Site of Cardiac Arrest Regardless of Etiology, Regardless of Resuscitation Efforts (Nursing or Care Facility)</i>	0	0%
<i>Cardiac Arrest, Female (Regardless of Resuscitation Efforts)</i>	3	33%
<i>Cardiac Arrest, Male (Regardless of Resuscitation Efforts)</i>	6	66%

¹ Both ETT placement and IV/IO access may reflect circumstances where resuscitation was halted. ETT placement does also not count times a King Airway is utilized.

² Includes rural Benton County responses