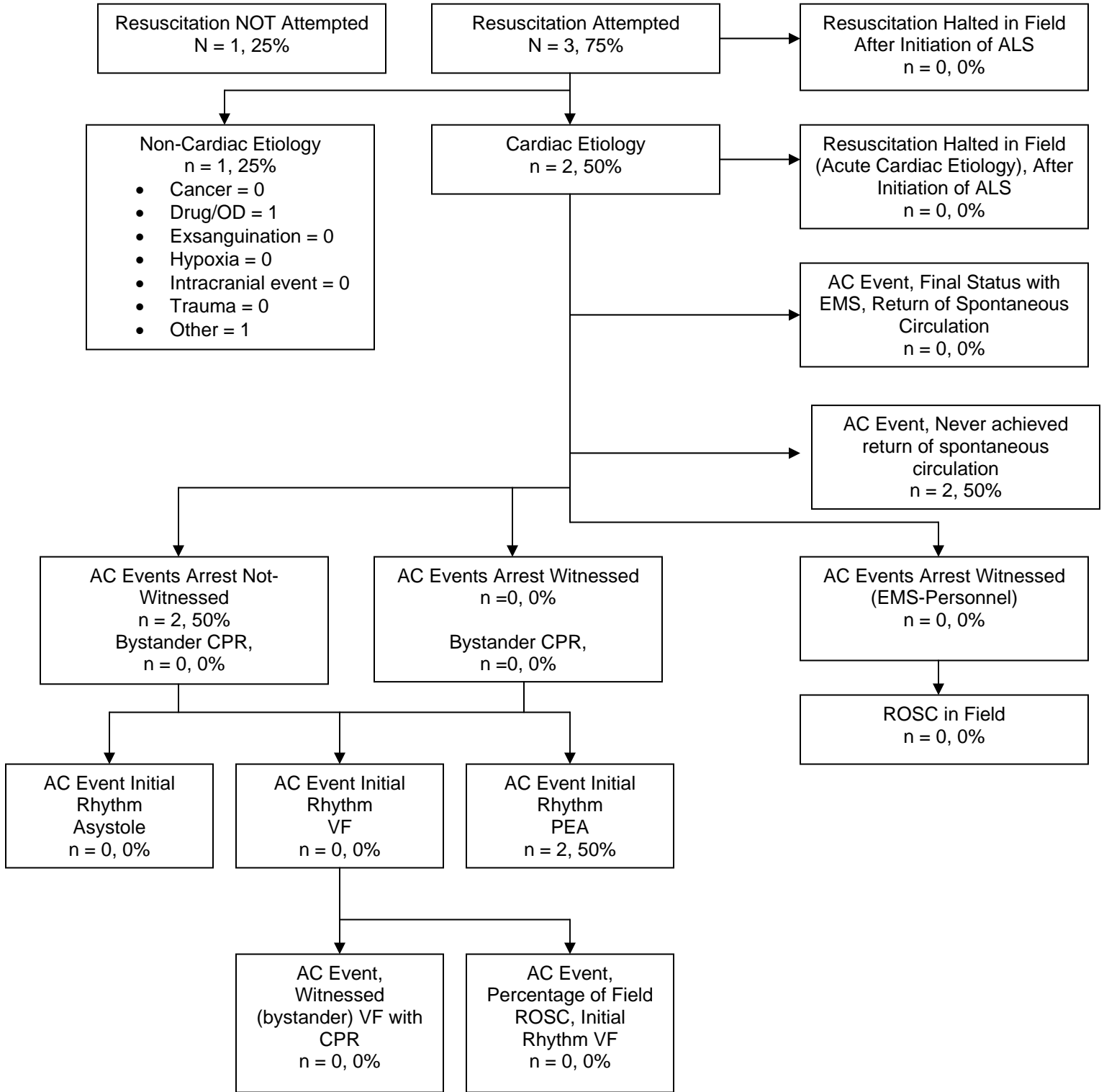




# Rogers Fire Department Cardiac Arrest Registry



**November 2010**  
**Utstein Style Template Showing Data on Cardiac Arrests**  
**4 Patients**



<b>Description</b>	<b>RFD Totals</b>	<b>%</b>
Total Number of Cardiac Arrests with Resuscitation Efforts	3	75
Total Number of Cardiac Arrest with Resuscitation Efforts: Cardiac Etiology	2	50%
Total Number of Cardiac Arrests with Resuscitation Efforts: Non-Cardiac Etiology	1	25%
Total Field ROSC, AC Event:	0	0%
Total Field ROSC Regardless of Etiology	0	0%
Rhythm on Arrival: Non-Ventricular Group, Cardiac Arrests with Resuscitation Efforts (Asystole/PEA), AC Event	2	50%
Rhythm on Arrival: Ventricular Group, , Cardiac Arrests with Resuscitation Efforts (VF/Pulseless/VT), AC Event	0	0%
Field ROSC from VF, AC Event	0	0%
ETT successfully placed/Cardiac Arrest with Resuscitation Efforts	1 <sup>1</sup>	25%
Intravenous/Intraosseous Access/Cardiac Arrest with Resuscitation Efforts	3	75%
Response Time to the Scene < 5 minutes (Responding to Arrival) on Cardiac Arrest with Resuscitation Efforts	3 <sup>2</sup>	75%
VF, Bystander CPR	0	0%
Site of Cardiac Arrest Regardless of Etiology, Regardless of Resuscitation Efforts (Home)	2	50%
Site of Cardiac Arrest Regardless of Etiology, Regardless of Resuscitation Efforts (Nursing or Care Facility)	2	50%
Cardiac Arrest, Female (Regardless of Resuscitation Efforts)	3	75%
Cardiac Arrest, Male (Regardless of Resuscitation Efforts)	1	25%

<sup>1</sup> Both ETT placement and IV/IO access may reflect circumstances where resuscitation was halted. ETT placement does also not count times a King Airway is utilized.

<sup>2</sup> Includes rural Benton County responses