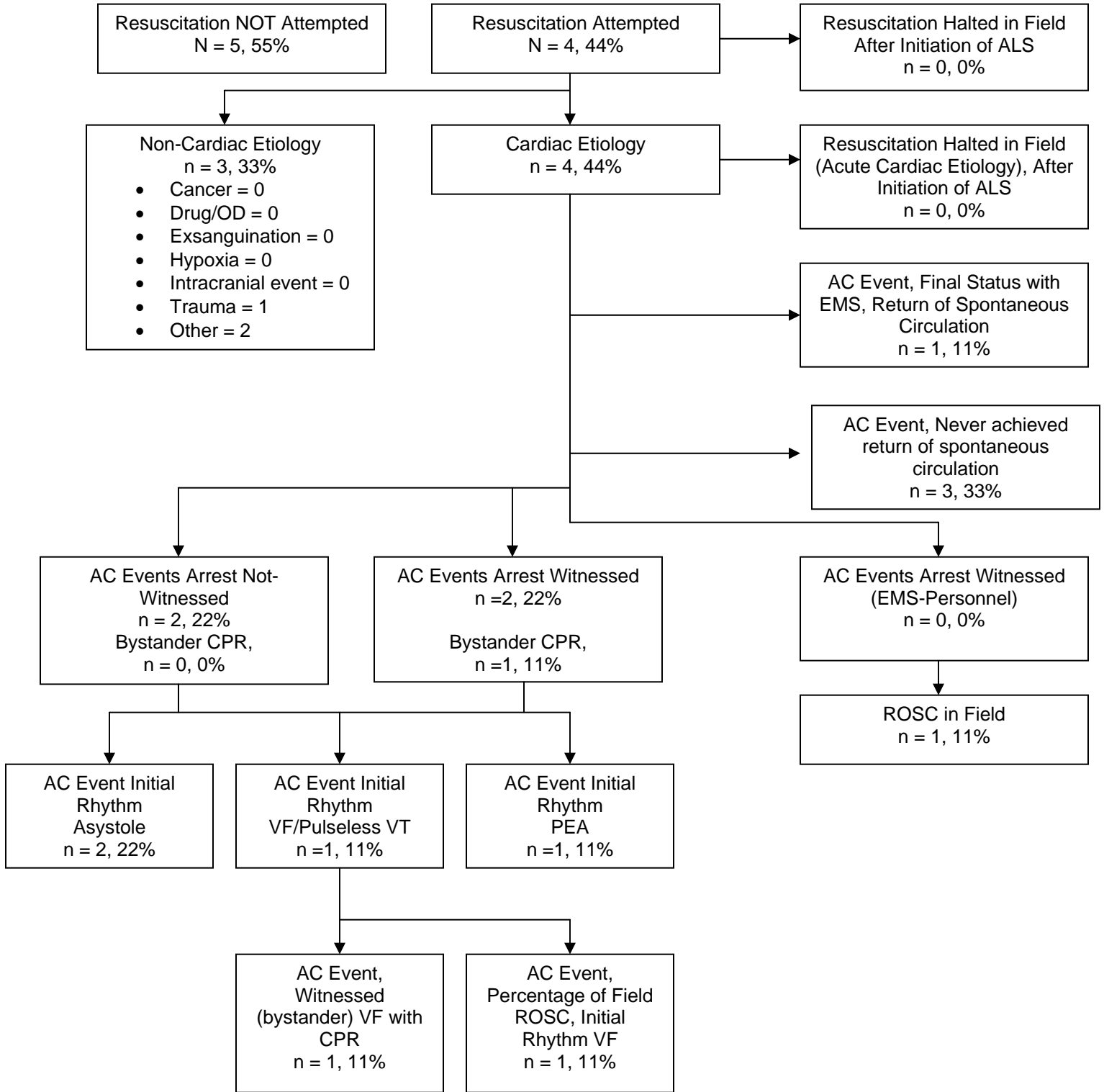




# Rogers Fire Department Cardiac Arrest Registry



**December 2010**  
**Utstein Style Template Showing Data on Cardiac Arrests**  
**9 Patients**



<b>Description</b>	<b>RFD Totals</b>	<b>%</b>
Total Number of Cardiac Arrests with Resuscitation Efforts	4	44
Total Number of Cardiac Arrest with Resuscitation Efforts: Cardiac Etiology	4	44%
Total Number of Cardiac Arrests with Resuscitation Efforts: Non-Cardiac Etiology	0	0%
Total Field ROSC, AC Event:	1	11%
Total Field ROSC Regardless of Etiology	1	11%
Rhythm on Arrival: Non-Ventricular Group, Cardiac Arrests with Resuscitation Efforts (Asystole/PEA), AC Event	3	33%
Rhythm on Arrival: Ventricular Group, , Cardiac Arrests with Resuscitation Efforts (VF/Pulseless/VT), AC Event	1	11%
Field ROSC from VF, AC Event	1	1%
ETT successfully placed/Cardiac Arrest with Resuscitation Efforts	3 <sup>1</sup>	33%
Intravenous/Intraosseous Access/Cardiac Arrest with Resuscitation Efforts	4	44%
Response Time to the Scene < 5 minutes (Responding to Arrival) on Cardiac Arrest with Resuscitation Efforts	0 <sup>2</sup>	0%
VF, Bystander CPR	1	11%
Site of Cardiac Arrest Regardless of Etiology, Regardless of Resuscitation Efforts (Home)	8	88%
Site of Cardiac Arrest Regardless of Etiology, Regardless of Resuscitation Efforts (Nursing or Care Facility)	0	0%
Cardiac Arrest, Female (Regardless of Resuscitation Efforts)	7	77%
Cardiac Arrest, Male (Regardless of Resuscitation Efforts)	2	22%

<sup>1</sup> Both ETT placement and IV/IO access may reflect circumstances where resuscitation was halted. ETT placement does also not count times a King Airway is utilized.

<sup>2</sup> Includes rural Benton County responses